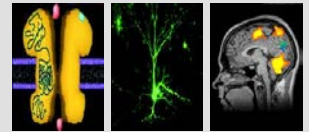


IGSN / SFB 1280 / BIOME
CONFERENCE



EXTINCTION LEARNING: THE NEURAL, BEHAVIOURAL, ONTOGENETIC, EDUCATIONAL, AND CLINICAL MECHANISMS

24th - 25th of April 2018

Veranstaltungszentrum, Ruhr University Bochum

Programme

April 24th **9:15** **Welcome** - opening of the conference
 Ulf Eysel Speaker IGSN
 Onur Güntürkün Speaker SFB 1280

Session 1 **9:25** **Brain-Immune-Interactions**

9:30 **Neil Harrison**
 Psychoneuroimmunology Lab, Department of Neuroscience, University of Sussex, Brighton, UK
A neurocomputational account of how inflammation differentially modulates learning to punishments versus rewards

10:05 **Ulrike Weber-Stadlbauer**
 Institute for Pharmacology and Toxicology, University of Zurich, Switzerland
Transgenerational transmission of behavioral deficits induced by prenatal immune activation

10:40 **Coffee break / Poster Session / Brainstorming Session (1)**

12:00 **Arthur Liesz**
 Institute for Stroke and Dementia Research, Ludwig-Maximilians-University, Munich, Germany
Neuroinflammatory Mechanisms in Acute Brain Ischemia

12:35 **Lunch break**



IGSN / SFB 1280 / BIOME Conference: EXTINCTION LEARNING

April 24th - Afternoon

Session 2: 13:40 Extinction & Associative Learning – Foundations

13:45 **Marie Monfils**

Department of Psychology, University of Texas at Austin, USA

Predicting extinction phenotype to optimize fear reduction

14:20 **Tor D Wager**

Department of Psychology and Neuroscience and the Institute for Cognitive Science,
University of Colorado, Boulder, USA

Frontostriatal and frontobulbar systems linking appraisal, extinction, and avoidance

14:55 Coffee break / **Brainstorming Session (2)**

15:45 **Jamila Andoh**

Department of Cognitive and Clinical Neuroscience, Central Institute of Mental Health,
Heidelberg University, Mannheim, Germany

Brain learning circuitry in chronic pain

16:20 **individual meetings** with RUB scientists

IGSN / SFB 1280 / BIOME Conference: **EXTINCTION LEARNING**

April 25th - Morning

Session 3 9:15 Emotional processing – Mechanisms of fear regulation

9:20 Allison Waters

School of Applied Psychology, Griffith University, Brisbane, Australia

Towards a cognitive-learning formulation of anxiety: Basic science and treatment implications

9:55 Christian Büchel

Institute of Systems Neuroscience University Medical Center Hamburg-Eppendorf, Germany

Expectations shape pain: The role of learning

10:30 Coffee break / Poster Session / Brainstorming Session (3)

11:30 Paul Pauli

Department of Psychology I, Julius-Maximilians-University Würzburg, Germany

Acquisition, extinction and generalization of contextual anxiety

12:05 Lunch break

IGSN / SFB 1280 / BIOME Conference: EXTINCTION LEARNING

April 25th - Afternoon

Session 4 13:10 Bridging the gap – Implications for psychopathology

13:15 Renée M Visser
Medical Research Council Cognition and Brain Sciences Unit, University of Cambridge, UK
Tracing the dynamic representations of emotional memories in humans

13:50 Coffee break / Brainstorming Session (4)

14:40 Ingrid Ehrlich
Hertie Institute for Clinical Brain Research, University of Tübingen, Germany
Amygdala circuits and mechanisms in associative auditory fear and extinction memory

15:15 Ann Meulders
Health Psychology Research Group, KU Leuven University, Belgium
& Maastricht University, The Netherlands
Pain-related fear and avoidance in chronic pain: an associative learning account

16:00 FAREWELL – end of conference